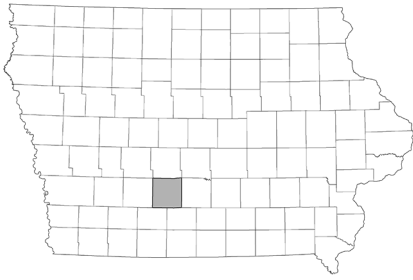


Data for Decision Makers



County Profile Madison County

report created: 06/30/2022

Population profile

Madison County is a metropolitan county in south central Iowa. It is composed of eight incorporated communities and their surrounding rural areas. From 2010 to 2020, Madison County's population increased by 5.54% while the state's population increased by 4.73%.

Total Population

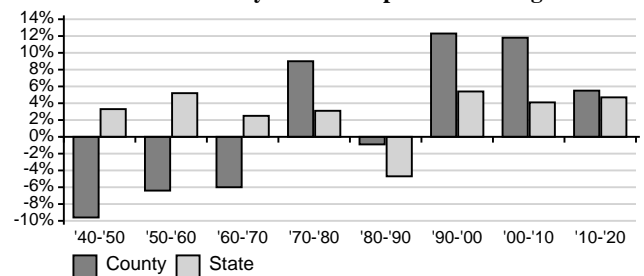
City	2000 ²	2010 ³	2020 ⁴
Winterset	4,768	5,190	5,353
Earlham	1,298	1,450	1,410
East Peru	153	125	115
Macksburg	142	113	97
Patterson	126	130	176
Bevington*	58	63	57
St. Charles	619	653	640
Truro	427	485	509
Male Total	6,918	7,797	NA
Female Total	7,101	7,882	NA
County Total	14,019	15,679	16,548
State Total	2,926,324	3,046,355	3,190,369

* City is located in multiple counties, total population is provided.

Neighboring Counties - Percent Population Change

County	'90-'00 ²	'00-'10 ³	'10-'20 ⁴
Adair, IA	-1.97%	-6.81%	-2.42%
Clarke, IA	10.21%	1.68%	4.98%
Dallas, IA	36.95%	62.29%	50.72%
Guthrie, IA	3.82%	-3.51%	-3.02%
Madison, IA	12.30%	11.84%	5.54%
Polk, IA	14.51%	14.96%	14.34%
Union, IA	-3.46%	1.83%	-3.16%
Warren, IA	12.87%	13.66%	13.37%
State of Iowa	5.39%	4.10%	4.73%

Madison County Percent Population Change



Regional Director

Brooke Blessington
200 W 2nd Avenue, Suite A
Indianola, IA 50125
bbless@iastate.edu
515-961-6237

County Office

Nicole Navin
117 N John Wayne Dr
Winterset, IA 50273
nnavin@iastate.edu
515-462-1001

<http://indicators.extension.iastate.edu>

Demographic Profile

Madison County

As with the other 98 counties in the state, Madison County's population is predominantly white, though between 2010 and 2020 there was a slight decrease in the percent of the population that is white. The percent of the population of Hispanic origin had a slight increase over the same time period. In 2010, Madison County had a higher percentage of young people (17 or younger) and a lower percentage of older people (65+) compared to the state. There is a lower percentage of individuals 25+ with a Bachelor's degree or higher in Madison County compared with the state.

Percentage of Population by Race/Hispanic Origin^{3,4}

Race Groups	County		State	
	2010	2020	2010	2020
One Race Only	99.1%	96.0%	98.2%	94.4%
White	98.1%	94.3%	91.3%	84.5%
White Alone, Not Hispanic	97.2%	93.7%	88.7%	82.7%
Black or African American	0.3%	0.3%	2.9%	4.1%
Asian	0.3%	0.5%	1.7%	2.4%
American Indian	0.2%	0.2%	0.4%	0.5%
Hawaiian/Other Pacific Islander	0%	0.1%	0.1%	0.2%
Other	0.2%	0.6%	1.8%	2.8%
Two or more races	0.9%	4.0%	1.8%	5.6%
Hispanic origin*	1.3%	1.9%	5%	6.8%

* Hispanics can be of any race.

Percentage of Population by Age^{2,3}

Age Groups	County		State	
	2000	2010	2000	2010
17 or younger	27.1%	27.2%	25.1%	23.9%
0 - 4	7.0%	7.0%	6.4%	6.6%
5 - 9	7.4%	7.8%	6.9%	6.6%
10 - 14	7.9%	7.9%	7.2%	6.6%
15 -17	4.8%	4.5%	4.6%	4.1%
18 - 24	6.9%	5.7%	10.2%	10.0%
25 - 44	27.4%	24.5%	27.6%	24.5%
45 - 64	23.4%	27.8%	22.2%	26.7%
65 or older	15.2%	14.8%	14.9%	14.9%
65 - 84	12.4%	12.4%	12.7%	12.4%
85 or older	2.8%	2.4%	2.2%	2.5%
Median Age (years)	37.9	39.8	36.6	38.1
Age Dependency ^{*b}	73.3	72.4	66.7	63.4
Old-Age	26.3	25.5	24.8	24.3
Child	47.0	46.9	41.8	39.1

^aAge Dependency Ratio^b

Households and Families by Type, 2016-2020⁵

	County		State	
	Estimate	MOE*	Estimate	MOE*
Total Households	6,619	+/-162	1,273,941	+/-4,037
Family Households	74.5%	+/-3.6%	62.9%	+/-0.3%
Married-couple	62.9%	+/-3.6%	49.6%	+/-0.4%
Female Householder ^a	7.0%	+/-2.3%	9.1%	+/-0.2%
Male Householder ^a	4.6%	+/-1.6%	4.2%	+/-0.1%
Nonfamily Households	25.5%	+/-3.6%	37.1%	+/- 0.3%
Householder Living Alone	22.9%	+/-3.4%	29.8%	+/-0.3%

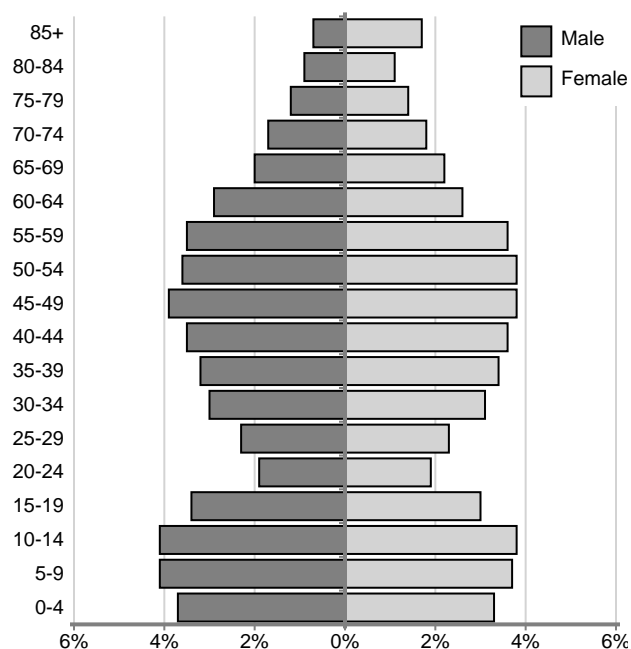
^aNo spouse present

Educational Attainment, 2016-2020⁵

	County		State	
	Estimate	MOE*	Estimate	MOE*
Population 25 and older	11,084	+/-87	2,104,864	+/-892
High School Graduate or Higher	95.5%	+/-1.6%	92.5%	+/-0.1%
Bachelor's Degree or Higher	25.3%	+/-3.0%	29.3%	+/-0.3%

*MOE = the margin of error for American Community Survey estimates⁵ which is a numerical value that when added to or subtracted from the point estimate value gives the range of a 90% confidence interval around the estimate.

Madison County Population Pyramid, 2010³



The median household income in Madison County is greater than the median household income of the state. More households in Madison County are in the \$100,000 or more household income group while more of Iowa households are in the \$50,000 to \$99,999 household income group. The median value of owner-occupied housing can be quite different from county to county. The median value of owner-occupied housing units is higher in Madison County than for the state. There is a lower percentage of vacant housing units in Madison County than there is for the state. Many housing units in Madison County were built prior to 1940.

Median Household and Per Capita Income, 2016-2020⁵

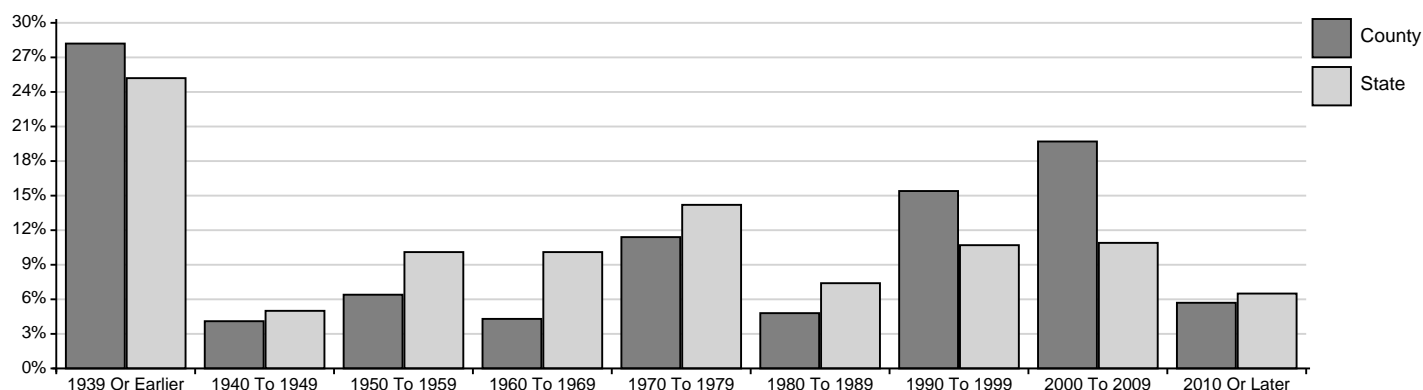
	County		State	
	Estimate	MOE*	Estimate	MOE*
Total Households	6,619	+/- 162	1,273,941	+/- 4,037
Less than \$14,999	3.6%	+/- 1.5%	9.1%	+/- 0.4%
\$15,000 To \$34,999	17.3%	+/- 2.1%	17.9%	+/- 0.6%
\$35,000 To \$49,999	13.2%	+/- 3.1%	13.1%	+/- 0.2%
\$50,000 To \$99,999	32.2%	+/- 2.5%	33.4%	+/- 0.7%
\$100,000 Or More	33.8%	+/- 2.5%	26.5%	+/- 0.6%
Median Household Income	\$71,811	+/- \$5,066	\$61,836	+/- \$294
Median Family Income	\$88,352	+/- \$8,732	\$79,186	+/- \$535
Per Capita Income	\$37,951	+/- \$2,489	\$33,021	+/- \$225

Housing Characteristics, 2016-2020⁵

	County		State	
	Estimate	MOE*	Estimate	MOE*
Total Units	7,093	+/- 48	1,407,819	+/- 743
Vacant	6.7%	+/- 2.2%	9.5%	+/- 0.3%
Occupied	93.3%	+/- 2.2%	90.5%	+/- 0.3%
Occupied ^a	6,619	+/- 162	1,273,941	+/- 4,037
Owner	79.4%	+/- 3.9%	71.2%	+/- 0.2%
Renter	20.6%	+/- 3.9%	28.8%	+/- 0.2%
Median Rent ^b	\$827	+/- \$83	\$806	+/- \$6
Median Value ^c	\$186,700	+/- \$9,969	\$153,900	+/- \$867

^aOccupied Units, ^bMedian gross rent of renter-occupied units ^cMedian value of owner-occupied units

Percent Housing by Year Built, 2016-2020⁵



In Madison County there is a higher percentage of workers in management, business, science, and arts occupations than any other occupation category while the production, transportation, and material moving occupation category makes up 11.9% of occupations of the civilian employed population in the county.

Occupation of the Civilian Employed Population, 2016-2020⁵

	County		State	
	Estimate	MOE*	Estimate	MOE*
Civilian employed population 16 years and over	9,005	+/- 298	1,611,524	+/- 4,809
Management, business, science, and arts	41.4%	+/- 3.5%	37.2%	+/- 0.3%
Service	12.8%	+/- 2.3%	15.9%	+/- 0.2%
Sales and office	19.0%	+/- 2.7%	20.4%	+/- 0.2%
Natural resources, construction, and maintenance	14.9%	+/- 2.4%	9.6%	+/- 0.2%
Production, transportation, and material moving	11.9%	+/- 2.5%	17.0%	+/- 0.2%

Madison County has a higher proportion of the population age 16 or older in the labor force than the state. A portion of those who are not in the labor force are people who are retired. The percent unemployed in Madison County is lower than that for the state overall. Earnings data are provided for the population 16 and over who have earnings. Median^a earnings in Madison County tend to be higher than the median earnings for the state. There is a lower percentage of families in Madison County below poverty level than for the state. Families with children tend to have a higher rate of poverty than families without children.

Employment Status, 2016-2020⁵

	County		State	
	Estimate	MOE*	Estimate	MOE*
Population 16+	12,639	+/- 117	2,504,540	+/- 1,329
in labor force	73.5%	+/- 2.4%	67.1%	+/- 0.2%
not in labor force	26.5%	+/- 2.4%	32.9%	+/- 0.2%
Civilian labor force	9,279	+/- 307	1,677,262	+/- 4,488
Unemployed	3.0%	+/- 1.4%	3.9%	+/- 0.1%

Median Employment Earnings, 2016-2020⁵

	County		State	
	Estimate	MOE*	Estimate	MOE*
Population 16+ ^a	9,565	+/- 296	1,785,065	+/- 4,527
Median Earnings	\$42,609 +/-	\$2,212	\$35,457 +/-	\$202
Female	\$32,473 +/-	\$5,646	\$29,387 +/-	\$372
Male	\$49,604 +/-	\$2,189	\$42,313 +/-	\$228
Female, full time ^b	\$49,196 +/-	\$3,142	\$41,357 +/-	\$216
Male, full time ^b	\$57,819 +/-	\$7,633	\$52,790 +/-	\$279

^a with earnings, ^b year round

Individuals Below Poverty Level by Race, 2016-2020⁵

	County		State	
	Estimate	MOE*	Estimate	MOE*
Total Population ^a	15,976	+/-75	3,051,284	+/-1,014
Percent Below	5.8%	+/-0.2%	11.1%	+/-0.2%
White Alone	5.7%	+/-2.0%	9.8%	+/-0.2%
Black/African American Alone	**%	+/-**%	30.8%	+/-2.0%
Asian/Pacific Islander Alone	**%	+/-**%	14.3%	+/-1.5%
American Indian Alone	85.7%	+/-36.5%	22.7%	+/-4.0%
Hawaiian Alone	**%	+/-**%	32.6%	+/-10.0%
Other Race Alone	**%	+/-**%	18.7%	+/-2.3%
Two or more races	**%	+/-**%	20.3%	+/-1.7%
Hispanic origin ⁺	**%	+/-**%	19.3%	+/-1.2%

^afor whom poverty status is determined, ⁺ Hispanics can be of any race. **MOE is high, use state estimate.

*MOE = the margin of error for American Community Survey estimates⁵ which is a numerical value that when added to or subtracted from the point estimate value gives the range of a 90% confidence interval around the estimate.

Individuals and Families Below Poverty Level, 2016-2020⁵

	County		State	
	Estimate	MOE*	Estimate	MOE*
Total Population ^a	15,976	+/-75	3,051,284	+/-1,014
Below poverty	5.8%	+/-0.2%	11.1%	+/-0.2%
17 and under	**%	+/-**%	13.3%	+/-0.4%
18 - 64	4.9%	+/-1.4%	11.4%	+/-0.2%
65+	**%	+/-**%	7.0%	+/-0.2%
All Families	3.4%	+/-1.6%	7.1%	+/-0.2%
with children	**%	+/-**%	11.7%	+/-0.4%
Married Couple	**%	+/-**%	3.2%	+/-0.1%
with children	**%	+/-**%	4.3%	+/-0.3%
Female HH ^b	**%	+/-**%	26.6%	+/-0.9%
with children	**%	+/-**%	33.6%	+/-1.2%

^a for whom poverty status is determined, ^b female householder, no spouse present, **MOE is high, use state estimate.

This series was prepared by:

Christopher J. Seeger, Professor & Extension Specialist
Bailey Hanson, Data Analyst II & Extension Specialist
Sandra Burke, Research Scientist III & Extension Specialist

For more information on these and other topics, please call the Extension and Outreach specialists listed on the cover page or visit the ISU Extension and Outreach Indicators Portal at indicators.extension.iastate.edu

This institution is an equal opportunity provider. For the full non-discrimination statement or accommodation inquiries, go to www.extension.iastate.edu/diversity/ext.

Information in this document was derived from:

- 1 U.S. Census Bureau; Decennial Census 1990, Summary File 1
- 2 U.S. Census Bureau; Decennial Census 2000, Summary File 1
- 3 U.S. Census Bureau; Decennial Census 2010, Summary File 1
- 4 U.S. Census Bureau; Decennial Census 2020, State Redistricting Data Summary File
- 5 U.S. Census Bureau; American Community Survey 2016-2020

^a Median is the middle value of a distribution.

^b The age dependency ratio compares, by age, those typically not in the labor force with those who typically are in the labor force. Old Age dependency is persons 65+ per 100 persons age 18-64. Child dependency is persons under age 18 per 100 persons age 18-64. The total age dependency ratio is persons under age 18 plus persons 65 or older per 100 persons age 18-64.